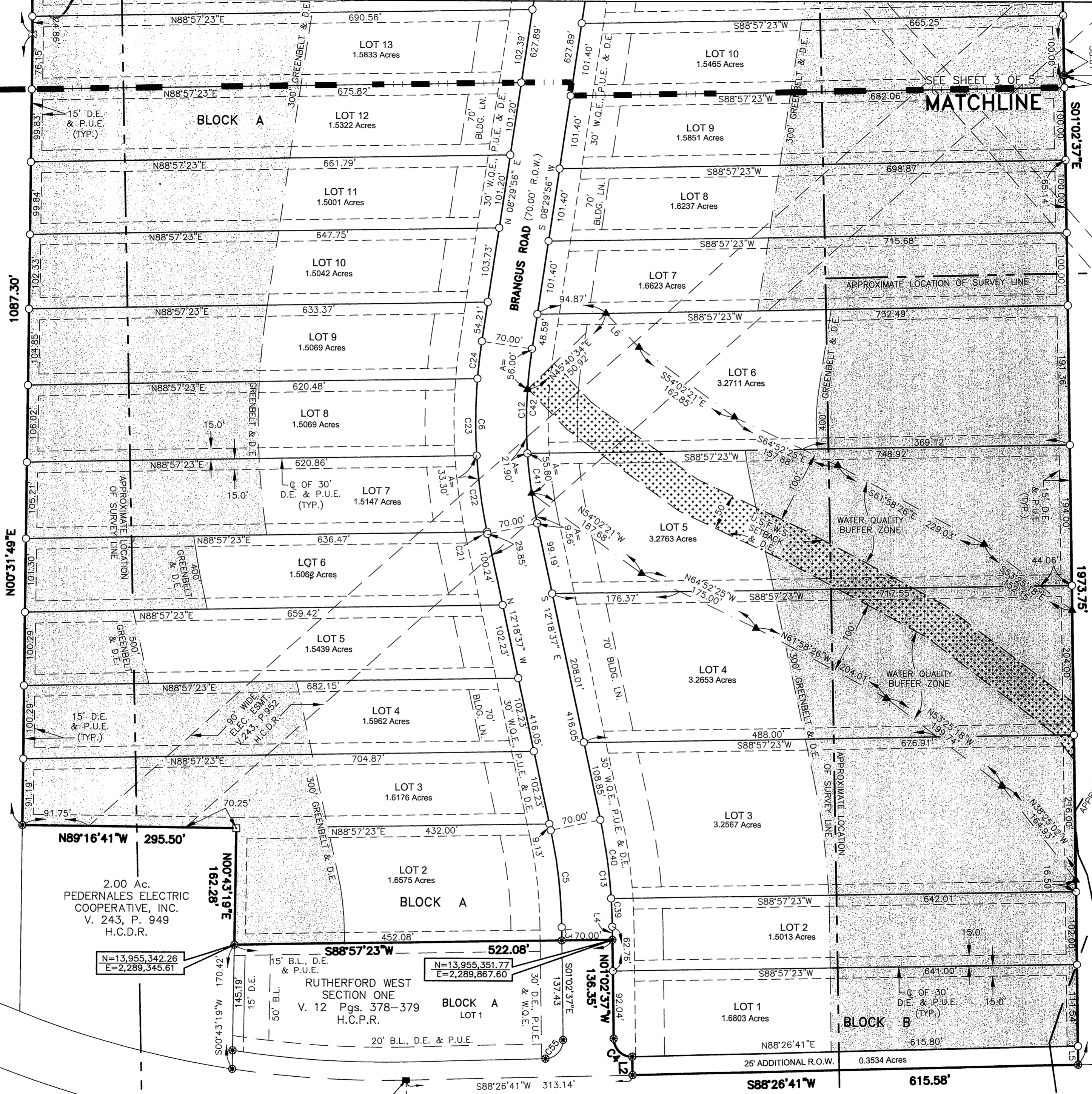


Vol. 14 Pg 52

RUTHERFORD WEST, SECTION 2

SEE SHEET 3 OF 5
MATCHLINE

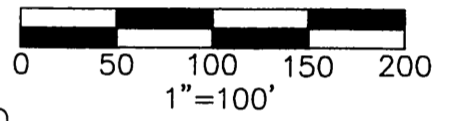
SEE SHEET 3 OF 5
MATCHLINE



THOMAS W. MOORE SURVEY No. 12
ABST. No. 304

L.C.R.A.
30' WIDE R.O.W. ESMT.
V.254, P.218
H.C.D.R.

REMAINDER OF
281.398 Ac.
WFCRW LLC
Doc. No. 05018557
O.P.R.H.C.



LEGEND

- O.P.R.H.C. OFFICIAL PUBLIC RECORDS HAYS COUNTY
- H.C.P.R. HAYS COUNTY PLAT RECORD
- H.C.D.R. HAYS COUNTY DEED RECORD
- U.S.F.W.S. U.S. FISH & WILDLIFE SERVICE
- BLD.G. LN. BUILDING LINE
- R.O.W. RIGHT OF WAY
- P.U.E. PUBLIC UTILITY EASEMENT
- D.E. DRAINAGE EASEMENT
- W.Q.E. WATER QUALITY EASEMENT
- HIGHWAY R.O.W. MARKER FOUND (TYPE I)
- P.E.C. BRASS DISK IN CONC. FOUND
- 1/2" IRON ROD FOUND
- 1/2" IRON ROD SET WITH PLASTIC CAP MARKED "CAPITAL SURVEYING CO. INC."
- ⊗ 1/2" IRON ROD FOUND WITH PLASTIC CAP MARKED "CAPITAL SURVEYING CO. INC."
- ⊠ FENCE CORNER POST FOUND
- ▲ CALCULATED POINT
- WATER QUALITY BUFFER ZONE
- ⊕ U.S.F.W.S. SETBACK AND D.E.
- ▨ GREENBELT AND DRAINAGE EASEMENT IS THE AREA BEYOND (AWAY FROM) RIGHT-OF-WAY

25.25 Ac.
MARILYN RAGLAND
DENTON E. RAGLAND
and PATRICE RAGLAND
VOL. 282, PG. 373
H.C.D.R.

2.00 Ac.
PEDERNALES ELECTRIC
COOPERATIVE, INC.
V. 243, P. 949
H.C.D.R.

N=13,955,342.26
E=2,289,345.61

JUAN ARMENDARIS
SURVEY FILE No. S-1173
ABST. No. 542

RUTHERFORD WEST, SECTION 2

CSCI CAPITAL SURVEYING COMPANY, INCORPORATED
1101 Capital of Texas Highway South
Austin, Texas 78746
Building C, Suite 100
(512) 327-4000

DRAWN BY: WAL	SCALE: 1" = 100'	F.B.
JOB NO.: 05538.10	DATE: MAY 22, 2007	SHEET NO.:
DRAWING NO.: 05538P2	CRD #: 05538	4 OF 5

PHOTOGRAPHIC MYLAR