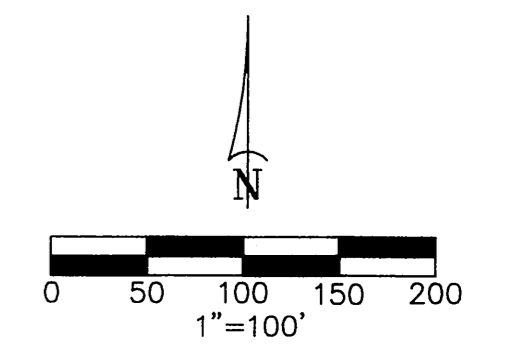
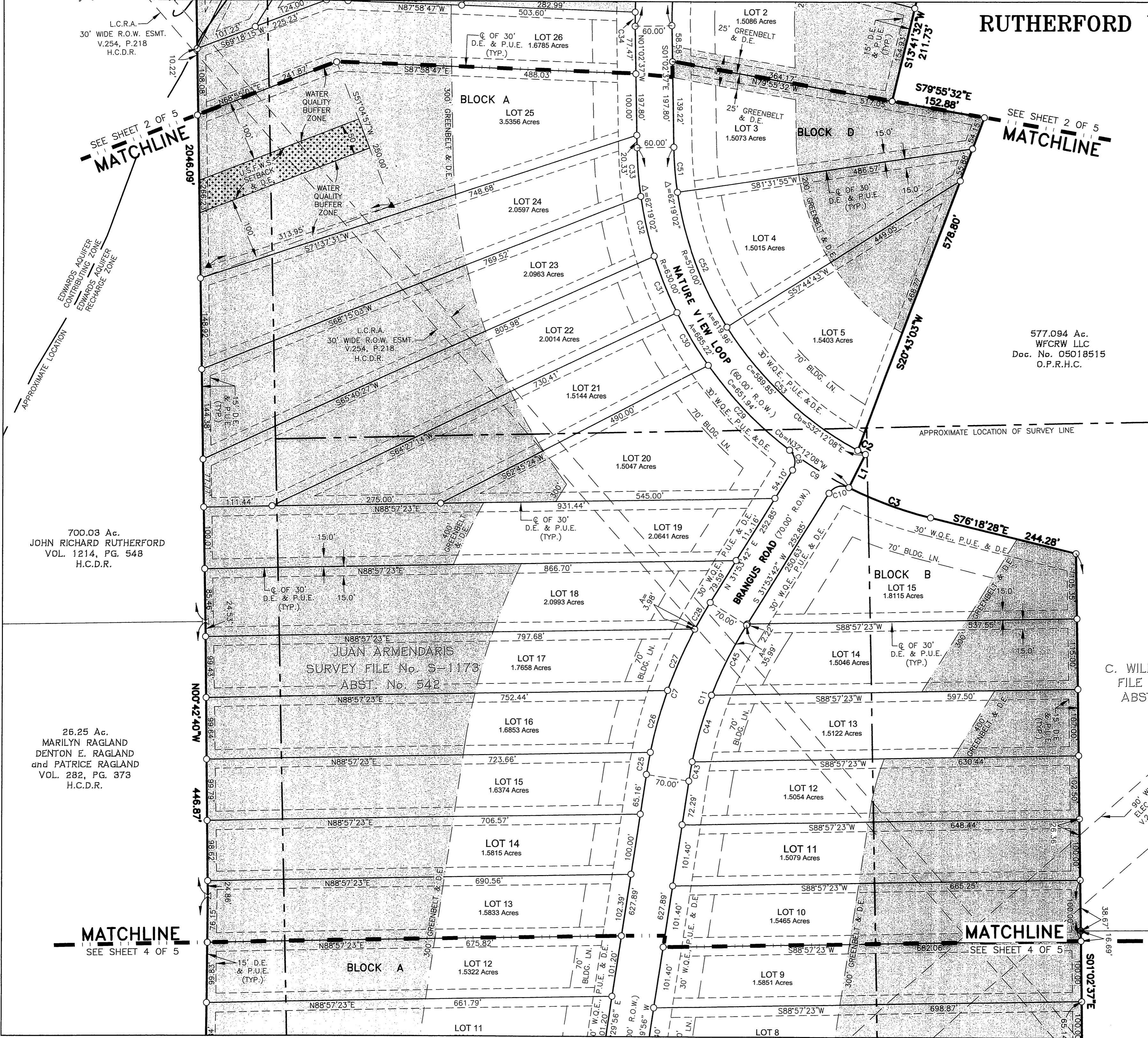


Vol. 14 Pg 51

# RUTHERFORD WEST, SECTION 2



- LEGEND**
- O.P.R.H.C. OFFICIAL PUBLIC RECORDS HAYS COUNTY
  - H.C.P.R. HAYS COUNTY PLAT RECORD
  - H.C.D.R. HAYS COUNTY DEED RECORD
  - U.S.F.W.S. U.S. FISH & WILDLIFE SERVICE
  - BLDG. LN. BUILDING LINE
  - R.O.W. RIGHT OF WAY
  - P.U.E. PUBLIC UTILITY EASEMENT
  - D.E. DRAINAGE EASEMENT
  - W.Q.E. WATER QUALITY EASEMENT
  - HIGHWAY R.O.W. MARKER FOUND (TYPE I)
  - P.E.C. BRASS DISK IN CONC. FOUND
  - 1/2" IRON ROD FOUND UNLESS OTHERWISE NOTED
  - 1/2" IRON ROD SET WITH PLASTIC CAP MARKED "CAPITAL SURVEYING CO. INC."
  - ⊙ 1/2" IRON ROD FOUND WITH PLASTIC CAP MARKED "CAPITAL SURVEYING CO. INC."
  - ⊗ FENCE CORNER POST FOUND
  - ▲ CALCULATED POINT
  - - - WATER QUALITY BUFFER ZONE
  - U.S.F.W.S. SETBACK AND D.E.
  - GREENBELT AND DRAINAGE EASEMENT IS THE AREA BEYOND (AWAY FROM) RIGHT-OF-WAY



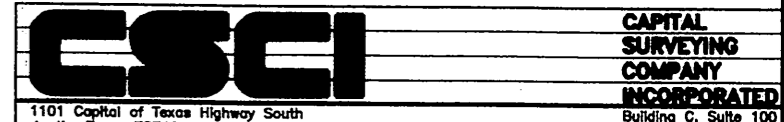
SEE SHEET 2 OF 5 MATCHLINE

SEE SHEET 2 OF 5 MATCHLINE

SEE SHEET 4 OF 5 MATCHLINE

SEE SHEET 4 OF 5 MATCHLINE

## RUTHERFORD WEST, SECTION 2



DRAWN BY: WAL	SCALE: 1" = 100'	F.B.
JOB NO.: 05538.10	DATE: MAY 22, 2007	SHEET NO.:
DRAWING NO.: 05538P2	CRD #: 05538	3 OF 5

PHOTOGRAPHIC MYLAR